

## Exercise 5

Entity: PERSON

Attributes:

P\_ID (PK)

YearOfBirth

YearOfDeath

PlaceOfBirth

PlaceOfDeath

Entity: BOOK

Attributes:

B\_ID (PK)

Title

Year

Author (FK)

Publisher (FK)

Entity: PUBLISHER

Attributes:

PUBL\_ID (PK)

Name

Address

City (FK)

Entity: CITY

Attributes:

C\_ID (PK)

Name

Entity: CORRESPONDENCE

C\_ID (PK)

From (FK)

To (FK)

Language (FK)

StartYear

EndYear

Shelfmark

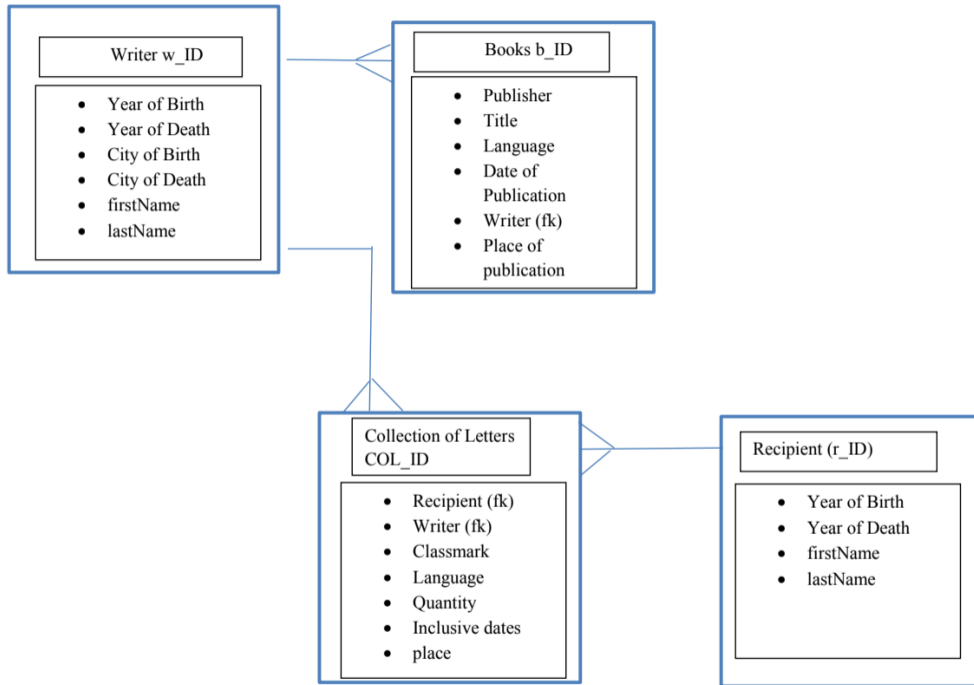
Place (FK)

Quantity

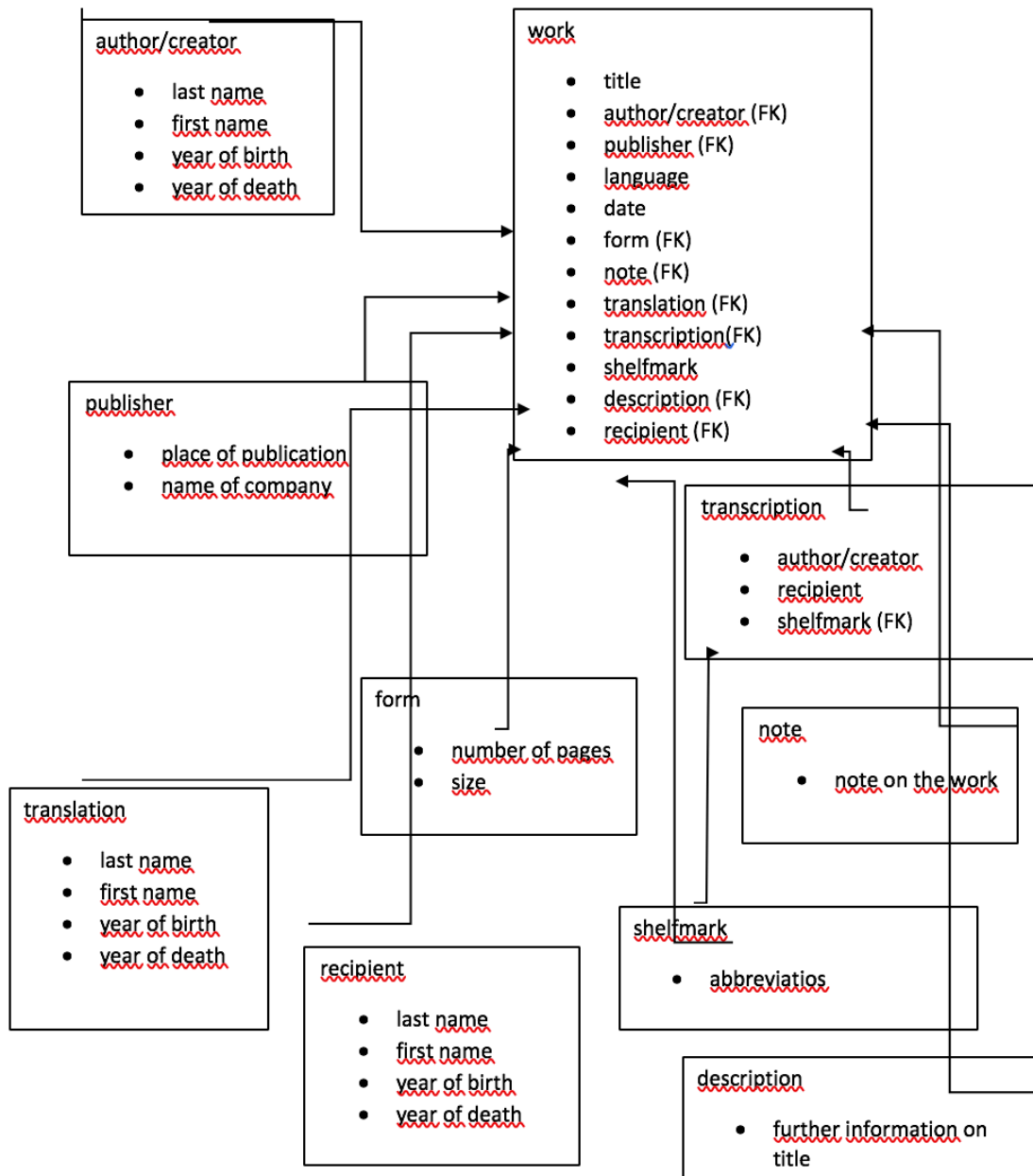
Entity: LANGUAGE

LANG\_ID (PK)

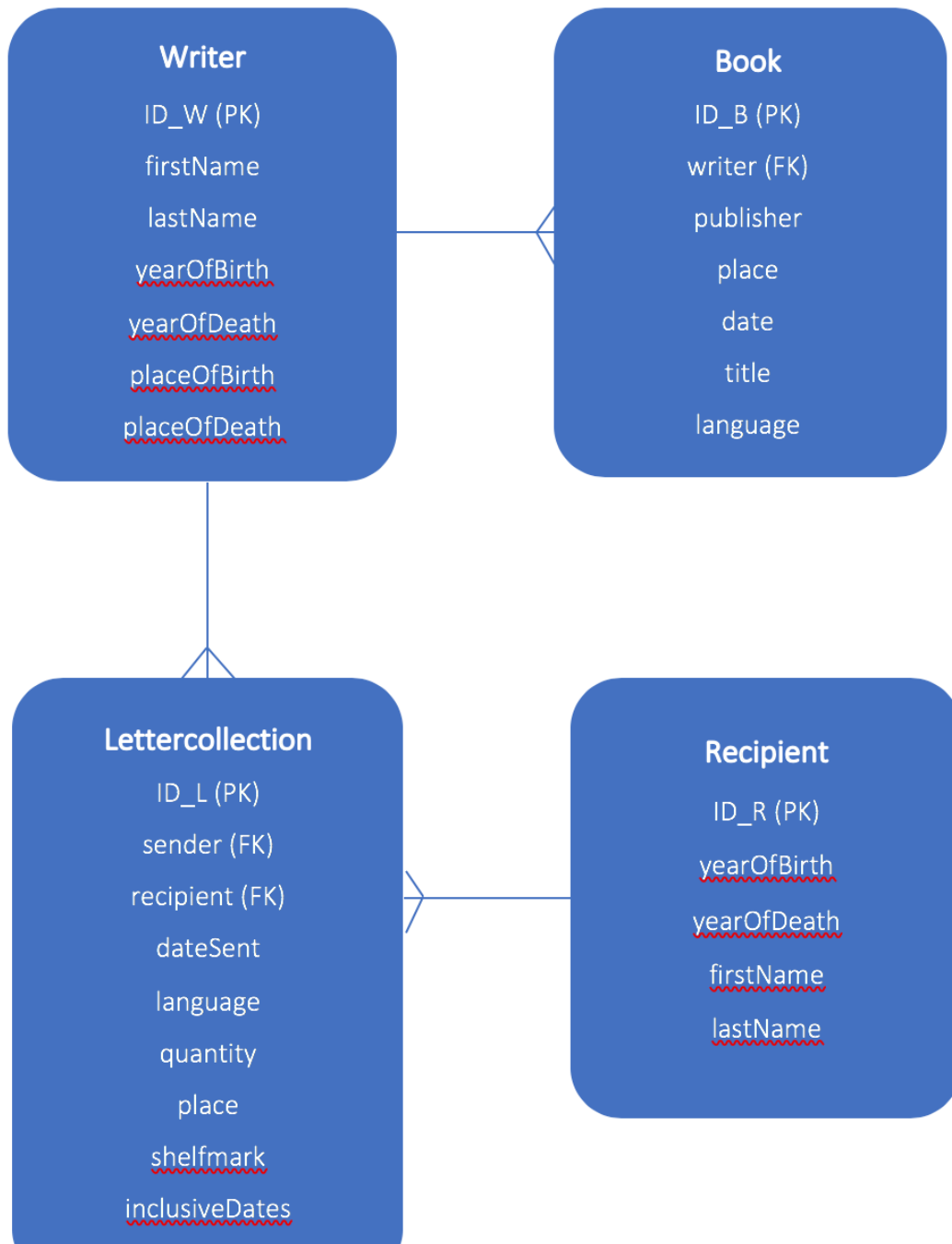
Name



- Separate entity for publisher
- Recipient and Writer can be combined in a single entity person



- Entities need to have a primary key
- Recipient and author can be combined in a single entity
- Shelfmark and description can simply be an attribute of the 'transcription'



- Language as a look-up table
- Recipient and Author can be combined

Author (A\_ID)  
 @DateBirth  
 @DateDeath  
 @PlaceBirth  
 @PlaceDeath

@Type (referring to whether this person wrote books or letters) (FK?)

Book (B\_ID)

@Title

@Publisher (FK)

@Pages

@Place

@Year

@NumberOfVolumes

Publisher (P\_ID)

@Name

@Address

@Place

Letter (L\_ID)

@Identification

@Title

@From

@To

@Place

@Date

@Language

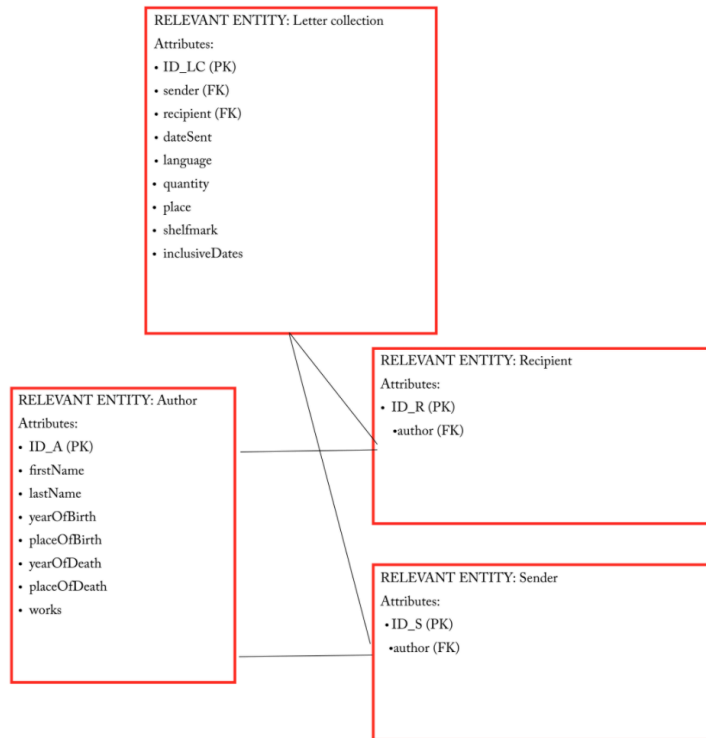
@NumberOfLetters

- No indication of Foreign keys in last three entities
- @type in author: Authors can write both letters and books

AUTHOR	<u>A ID</u>
firstName	
lastName	
LifeSpan	
PlaceofBirth	
PlaceofDeath	

ITEM	I_ID
ItemName	
Author (FK)	
Recipient	
Place	
Dates	
Language	
NumberofLetters	
Publisher	
PublicationYear	

- In AUTHOR: place can be defined as a separate entity
- In ITEM: Recipient is a foreign key
- How can we capture information about the publishers?



- Author and recipient can be combined into a single entity PERSON
- How can we capture information about the books that people have written?

Tabella 1

		<b>Book</b>		
		Title	Text	
		Published by	Text	
		date	Number	
		Place	Text	
		pages	Number	
		Author	Person	
<b>LTK</b>				
From	Person	<b>Person</b>		
to	Person	Full name	Text	
place	Text	born	Text	
Date	Number	died	Text	
language	Text	lived	Number	
Quantity	Number	Author of	Book	

- Is 'publisher\_by' in BOOK a foreign key?
- How can we capture the information about publishers?
- What type of information do we need to record under 'lived' in PERSON?
- Both "From" and "To" in "LTK" need to be defined as foreign keys, referring to PERSON